

Butt Welding Machine Model ST



Competence connects.



Butt Welding Machine Model ST

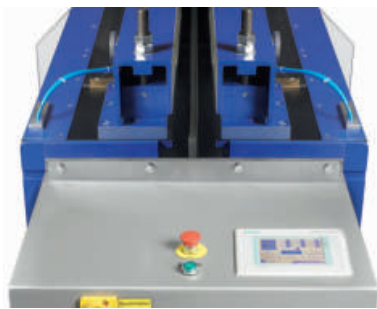


The ultimate efficiency – for sheet thicknesses up to 25 mm

The Butt Welding Machines, model ST shines through highest quality standards and operator friendly control features. As is standard with all WEGENER International, the construction of the ST

The composite construction of the welding tables guarantees precision butt welds without misalignments even at permanent usage of the machine at maximum capacity. This proven design concept and the patented, maintenance free mechanical force synchronization (parallel travel mechanism) of the welding tables are the ideal prerequisites for quality assured welding in accordance with DVS 2208-1.

model butt welders is based on a heavy duty welded steel machine frame with integrated, task conforming and precisely machined welding tables.



Control system with 7" full graphics touch screen

User-friendly control system

Included in the base machine is a Siemens PLC out of S7 series with 7" graphic touch screen panel. The operator can enter the material and geometry specific parameters 'pressures-timestemperature' on a easily understandable screen. The appropriate welding pressures are controlled with a proportional valve. Optionally, the machine can be equipped with a property dataset (parameter), based on the DVS parameters

after entering the material, plate thickness and plate length the machine automatically determines the required time for welding, force, temperature and these values for each welding set and used. A window 'fault' clearly explains any possible operating related problems thus easing trouble shooting.

Features

- Machine design based on a sturdy welded framework construction. All of the machine's components are matched to the relevant load case to ensure the top quality welding of plastics
- Welding tables in composite construction to eliminate torsion stresses and provide stiffness
- Pneumatics equipped with maintenance friendly valve clusters of the latest generation
- Integrated and highly dynamic electronic heating element temperature control
- Flexibility to end or stop the process times during the welding cycle
- Robust and in the clamping bar integrated non-rotating clamping feet
- High quantity of decoupled and anti-twist protected clamping feet in order to match perfectly to each sheet length
- Highly flexible suspension of clamping feet for secure fixation of sheet adjacent to the welding area
- Interpretation of the max. machines forces on an 8 bar compressed air supply
- Ergonomic cleaning position for the heating sword
- Ergonomic working table height



Upper position of the height adjustable clamping beams



Lower position of the height adjustable clamping beams



Ergonomic cleaning of the heating element

Options

- Height adjustable clamping beams - two steps to process sheet thicknesses < 25 mm (PE/PP); twin-wall-sheets up to 58 mm
- Extension arms
- Automatic locking of clamping beams
- Material property dataset (parameter) with automated choice of specific welding pressure, temperature and times
- Storage options for productspecific parameter sets (20 pieces)

Technical Data	ST 225	ST 325	ST 425
Machine length (mm):	3,550	4,550	5,550
Machine width (mm):	800	800	800
Machine height (mm):	1,100	1,100	1,100
Total weight approx. (kg) **:	2,150	2,700	3,300
Maximum working width (mm):	2,050	3,050	4,050
Sheet Thickness to be welded (mm):			
PE (0.15 N/mm ²)	3 to 25	3 to 25	3 to 25
PP (0.10 N/mm ²)	3 to 25	3 to 25	3 to 25
PVDF (0.10 N/mm ²)	3 to 25	3 to 25	3 to 25
PVC-C bei 8 bar (0.5 N/mm ²)	3 to 7,50	3 to 7,50	3 to 7,50
PVC-U bei 8 bar (0.6 N/mm ²)	3 to 6,25	3 to 6,25	3 to 6,25
Min. channel cross section inside dimension (W x H in mm) *:			
	270 x 250	270 x 250	270 x 250
Min. cylinder diameter (mm)*:			
	350	350	350
Power supply standard:			
	230 V 1N/PE 50/60 H		
Power supply with option height adjustable clamping beams:			
	230/400V 3N/PE 50/60 Hz		
Power consumption standard (kW):	2,5	3,5	4,5
Power consumption with option height adjustable clamping beams (kW):	4,5	6,5	8,5
Compressed air connection (bar):	8	8	8
Clamping force (at 8 bar in kN):	15,4	28	37,5
Welding Force:			
Min. Table force (N):	600	700	700
Max. Table force (at 8 bar in kN):	7,7	11,5	15,5
Heating element standard Teflon coated T max = 260° C (W x H in mm):	15 x 50	15 x 50	15 x 50
Heating element with option height adjustable clamping beams Teflon coated, T max = 260° C (B x H in mm):	20 x 80	20 x 80	20 x 80

* Option height adjustable clamping beam, sizes only valid for lower clamping beam position

** incl. Extension Arms

Range of Application:

Tanks and containers
 Apparatus construction
 Ventilation systems
 Water treatment systems
 Environmental technology
 Swimming pools
 Scrubbers
 Transport and logistics



A strong connection for your success



The WEGENER machines

Butt welding machines
Welding by bending machines
Foam welding machines



The WEGENER equipment

Extrusion welders
Hot gas welders
Wedge welders
Testers to check the quality



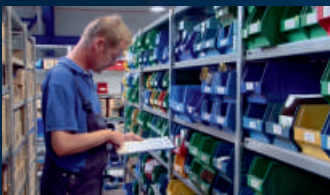
The WEGENER specialists

Customised and product-specific special machines
Crease-hinge machines, surface welding systems,
Pallet welding machines, edge sealing systems,
foam welding machines and many more
customised solutions



The WEGENER transfer of know-how

Application technology advice
Feasibility study
Training courses and seminars



The WEGENER service

Worldwide support
Commissioning on site
Spare parts service



WEGENER ONLINE

Visit us!



WEGENER International GmbH

Ernst-Abbe-Str. 30
D-52249 Eschweiler



+49 2403 70484-0



+49 2403 70484-99



info@wegenerwelding.de

www.wegenerwelding.de